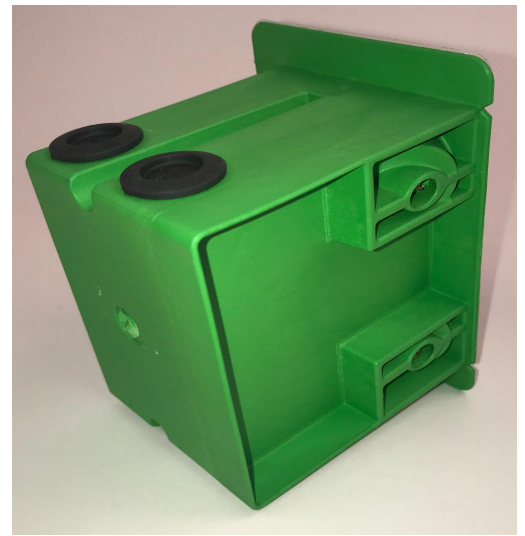




# Frog-Box



## What's the big deal?

- The Flange mounts flush to the stud. No more drywall breakage or screw pops.
- Pre-applied adhesive to the flange for positive attachment to the vapor barrier.
- Tight seal at wire entrance points.
- T15 Torx head screw for solid installation and easy adjustments.
- Flat, smooth exterior for easy insulating.